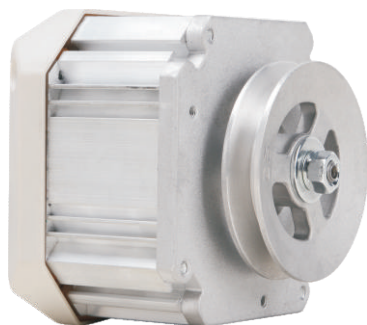


JACK

China No.1

POWER SAVING

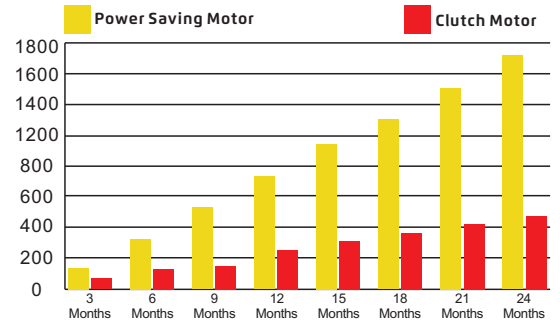


JK-513A

Power Saving Motor

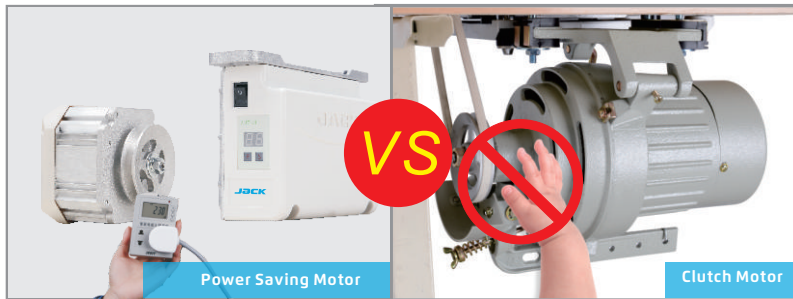
Advantages:

1 Power saving 71%



Each set can save \$70 per year and equal 2 clutch motors

2 Direct drive



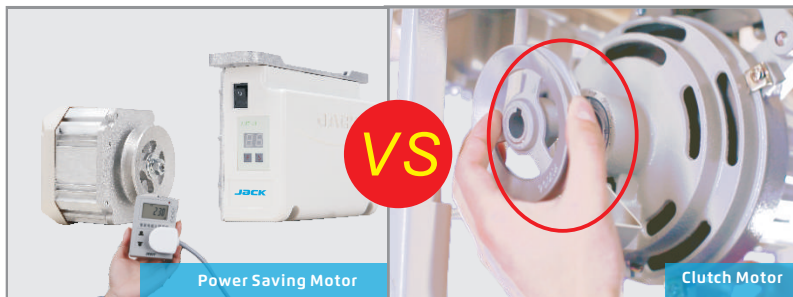
Direct drive, run safety.

3 High speed , adjustable



The speed could be adjusted very easily.

4 Quick and easy maintenance



Quick and easy maintenance with integrated motor and fewer parts.

5 Lower temperatures while the motor working guarantee longvity of the motor.

6 Lower motor vibration and noise make the operator a better working environment.

| Model | | | | | | Needle Position | | NW/GW (kg) |
|-----------|------|------|-------|---------|---|-----------------|-------------|------------|
| | V | W | Nm | (S.p.m) | | | (mm) | |
| JK-513A | 220V | 550W | 1-3.5 | 5000 | ✓ | | 535x335x195 | 8.2/10.8 |
| JK-513A-1 | 220V | 550W | 1-3.5 | 5000 | ✓ | ✓ | 535x335x195 | 8.2/10.8 |
| JK-563A | 220V | 750W | 1-3.5 | 3500 | ✓ | | 535x335x195 | 8.2/10.8 |
| JK-563A-1 | 220V | 750W | 1-3.5 | 3500 | ✓ | ✓ | 535x335x195 | 8.2/10.8 |