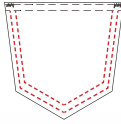
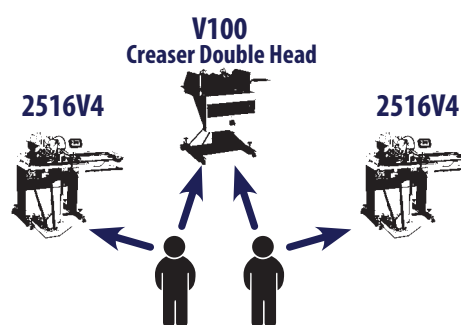


JEANS TECHNOLOGY
Vibemac Know-How
Step Sequence 15



The automatic pocket setter unit 2516V2 was born in 1992, something new in the market after many sewing machines producers worldwide experienced their own pocket setters technology, Vi.Be.Mac. found out that none of them was able to match perfectly the customers' and fashion market requests. This short delay in launching its own pocket setter gave Vi.Be.Mac. company the chance of developing a machine able to offer at the same time: flexibility, high productivity, easiness of use and low running costs.

One of the great features Vi.Be.Mac. added to its vision of pocket setter has been the low running cost of the unit; an easy device pocket mould locally made by the official dealers or directly at our customer's factories. This achievement added to an exclusive loader-stacker system gives incredible performances in productivity. The successful partnership with the Japanese Mitsubishi produced another excellent machine, Vi.Be.Mac. presents the new double colour pocket setter 2516V4 DCT born to satisfy the request of fashion for all the top world buyers.



Technical Features

The 2516V4 DCT applies any kind of pre-pressed patch pockets on jeans and casual trousers, army-pants and work wear.

It is equipped with Mitsubishi PLK-G direct drive double needle lock stitch sewing head, with shuttle hook and thread trimmer.

The first worldwide double colour device patented by Vi.Be.Mac. allows to stitch with 2 threads in 2 different colours in one single sewing cycle.

The patented loading-holding system allows the complete freedom of style of stitching any kind of pattern the fashion style requests. The cost of the moulds is the cheapest worldwide, delivered by Vi.Be.Mac. in 7 days, they can even be made locally. It is possible to stitch any shape of pockets (round, square, pockets with zip, asymmetric pockets), it is possible to apply labels, to sew darts and pleats, flaps, labels, embroider back pockets, patch cargo pockets.

By means of the user friendly touch screen panel it is extremely easy to create any kind of pattern desired, it's also possible to purchase a software to create the patterns on the PC or to send a sketch to our pocket design department and have it sent in maximum 24 hours ready made, download it on a flash memory stick and upload it on the machine.

PROGRAMMABLE DIRECTLY ON THE MACHINE



Technical Specifications

Sewing Head: Mitsubishi PLK-G30 MAXI Vi.Be.Mac.

Max Sewing Area: 305 X 250 mm

Clamp Sewing Area: 250 X 247 mm

Stitching Length: from 0,1 to 20 min (0,1 Step)

Control Box: Mitsubishi PLKGCU20

Sewing Machine Motor: Ac Servomotor Mitsubishi 750w (Direct Drive System)

Max Sewing Speed: 2800 rpm (single needle version), 2500 rpm (double needle version)

Time Required To Change Clamps / Moulds (V100+2516V4): 5 min

Easy Design Program

Application: light to medium, medium to heavy, stretch

Storage Of Pattern Data In The Memory: 512 patterns in the internal memory
+ Usb Flash memory stick

Product Counter: up / down system (0-9,999)

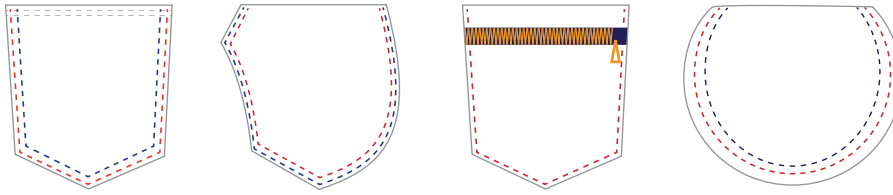
Power Supply: 220 V 50/60 Hz

Gross Weight: 264 kg
Fumigated Recycled Packing Dimension

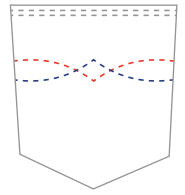


All the operations available with the programmable units equipped with PLKG V-MAC sewing head.

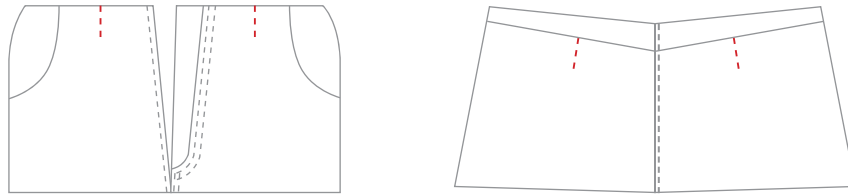
Any kind of pockets with label too



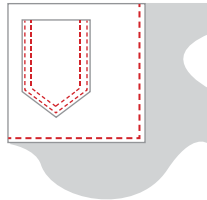
Pocket decorative



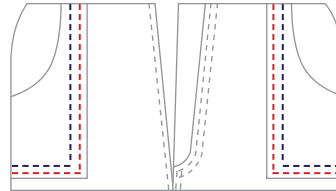
Darts and pleats



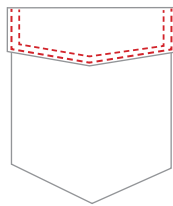
Attach pocket facing + Coin Pocket at the same time



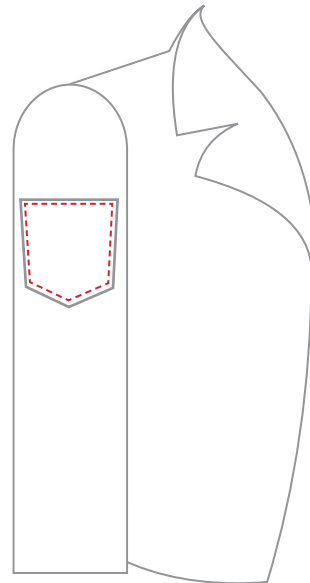
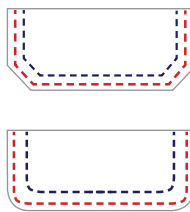
Front patch pocket



Top stitch for flap



Flap run stitch



CHEAPEST CLAMP SYSTEM IN THE MARKET - LOCALLY MADE WORLDWIDE

