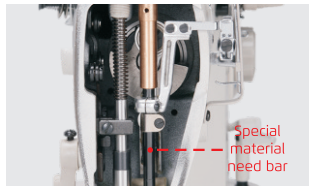


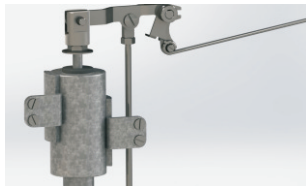


JK-8558G

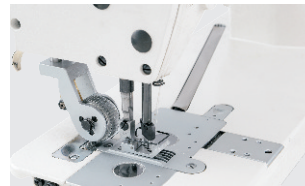
Power Saving Chain Stitch Machine
Power saving



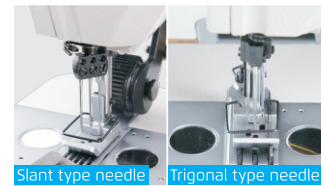
Semi-dry



Auto presser foot lifter



Rear puller



Two needle gauges (JK-8560G)

Model	Needle Array	Needle Gauge	Needle	Needle No.	Thread No.	Needle Distance (mm)	Presser Foot Height (mm)	Light Material	Medium Heavy Duty	Heavy Duty	Max. Speed (s.p.m)	Volume (mm)	Weight (kg)
JK-8558G-WZ	Parallel Double Needle	1/4,3/16, 1/8,3/8	TV×7 14#	2	4	1.4-4	4.5 (knee Control 8-10)	√	√		4000	675×275×595	39/47
JK-8558G-1WZ	Single Needle	-	TV×7 14#	1	2	1.4-4	4.5 (knee Control 8-10)	√	√		4000	675×275×595	39/47
JK-8558G-2WZ	Vertical Double Needle	3/16	TV×7 14#	2	4	1.4-4	4.5 (knee Control 8-10)	√	√		4000	675×275×595	39/47
JK-8560G-WZ	Slant Three Needle	1/8	TV×7 14#	3	6	1.4-4	4.5 (knee Control 8-10)	√	√		4000	675×275×595	39/47
JK-8560G-WZ-PL	Slant Three Needle	1/8	TV×7 18#	3	6	1.4-4	4.5 (knee Control 8-10)		√		4000	675×275×595	39/47
JK-8560G-PHWZ	Trigonal Three Needle	1/8	TV×7 21#	3	6	1.4-4	4.5 (knee Control 8-10)		√	√	4000	675×275×595	39/47

Note: PL: rear puller; JK-8558G/8560G: auto presser foot lifter is optional the parameter of JK-8558WD/8560WD is the same with JK-8558G/8560G.